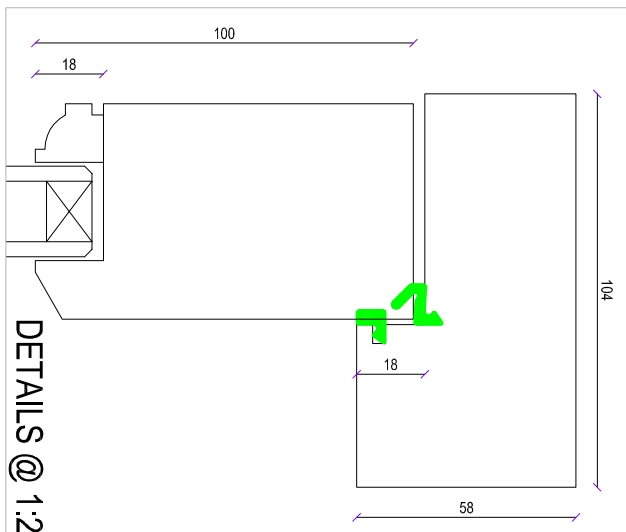
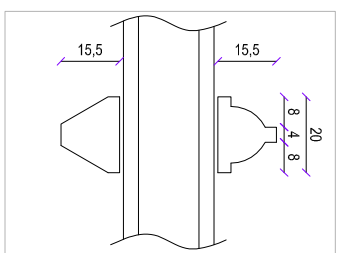


DETAILS @ 1:2



DETAILS @ 1:2

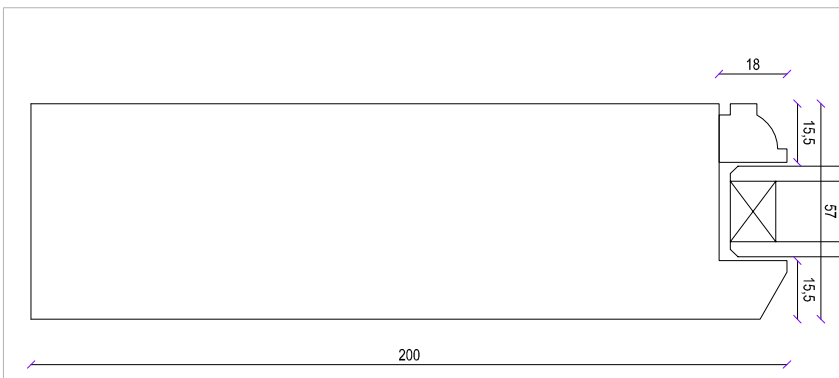


QUOTE REFERENCES:
 DG01
 JOB No 539
 C-L No 1312

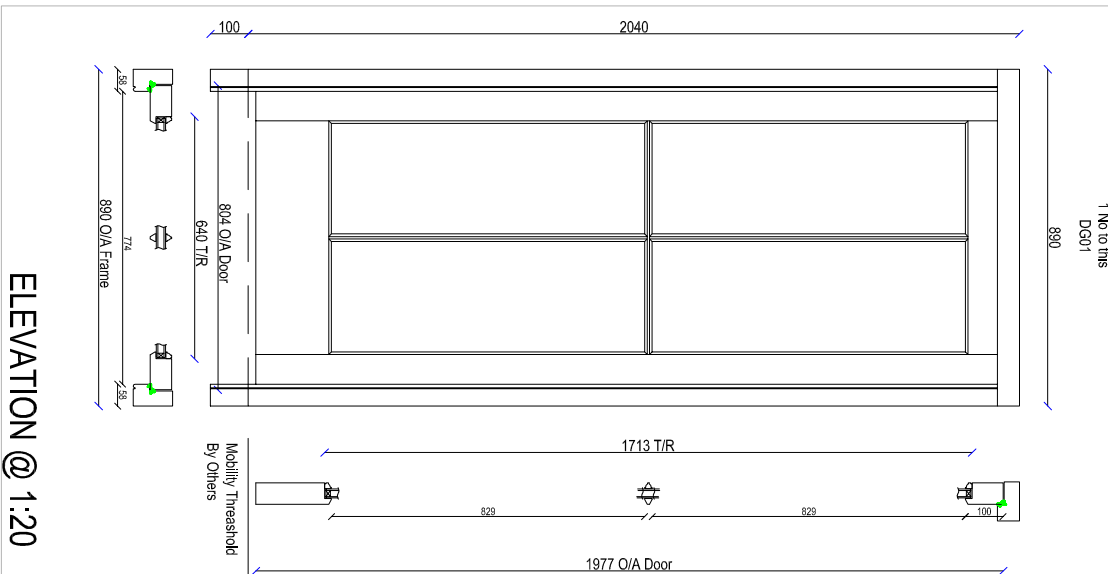
1 No EXTERNAL DOOR & FRAME
 CONSTRUCTED FROM B.C.PINE
 OVERALL FRAME 890mm WIDE X 2040mm HIGH
 OVERALL DOOR 804mm WIDE X 1977mm HIGH
 24mm TOUGHENED FACTORY DOUBLE GLAZED
 FULL FACTORY "WHITE" PAINTED FINISH

phone : 01304 842 336
 fax : 01304 841 104
 info@bsqualityjoinery.co.uk
 www.bsqualityjoinery.co.uk

B&S Quality Joinery Ltd
 1 Cooling Road
 Aylesham Ind Est
 Aylesham
 Kent
 CT13 3EP



ELEVATION @ 1:20



1 No to this
 DG01

Client:			
Project:	DG01		
Date:	Job No.	539	
Drawn By:	Drawing No.	BSQJ12004-3 REV A	
Scale:	Cut List No.	1312	

Please Note - This drawing is the sole property of B&S Quality Joinery Ltd and must not be copied or passed on to any third party without the written consent of B&S Quality Joinery Ltd